



# JD Edwards

## A Platform for Automation and Innovation

JD Edwards Nordic Conference 2024

Mark Herwege

Bart Vanden Abeele

Master Principal Solution Engineers JD Edwards  
Oracle Applications Unlimited Western Europe

May 14, 2024



Premier Support is available through

**AT LEAST 2023**

***Rolling 10 year window***

Reinforcing Oracle's Applications

Unlimited commitment to customers  
and continuous product innovation

Premier Support provides access to product updates and  
enhancements, as well as technical assistance and support resources  
to help you maintain your on-premises Oracle Applications

# State of JD Edwards

Relentlessly Improving and Innovating JD Edwards

## Continuously Innovating

**30+**  
EnterpriseOne 9.2 Releases

**850+**  
New features in 9.2

**100+**  
Features added in last year

## Continuously Adopting

**940+**  
Customers using Orchestrator

**310+**  
Customers on OCI

**420+**  
JDE Customers with  
Hybrid Cloud Solutions

## Continuously Sharing

**25,000+**  
LinkedIn Members

**720+**  
Customer Go Lives/Upgrades

**400+**  
Customer Success Stories



# Waves of Innovation

The background features a dark blue gradient with several flowing, wavy lines in shades of light blue and cyan. These waves are overlaid on a complex network of thin, light blue lines connecting small, glowing nodes, creating a sense of digital connectivity and movement.

# Industry Trends

**Innovating** for JD Edwards customers business outcomes



# Digital Transformation Wave

- Personalization and Extensibility
- Process Automation
- Low Code/No Code
- Mobility
- IoT
- Blockchain
- Industry 4.0

# Cloud Computing Wave

- Cloud Infrastructure
- Complementary SaaS
- Complete SaaS
- Autonomous Systems
- Analytics



# Artificial Intelligence Wave

- AI Infrastructure
- AI Services
- Predictive AI
- Generative AI
- Retrieval Augmented Generation
- Natural Language Processing
- Digital Assistant

# MANUFACTURING

ENSURE DESIGN ORGANIZATION SIMULTANEOUSLY

PRODUCTION

OUTPUTS

DATA

PURCHASING

SYSTEMS

PROBLEM

MUST

FACTORY

SUB-ASSEMBLES

NEEDS

ERP

QUANTITIES

SAFETY

LEADTIME

MRP

DUE

OUTPUT

PURCHASE

PARTS

LIKE

RECORDS

EXAMPLE

DATE STOCK

ORDER

INVENTORY

SYSTEM

PLANNING

PRODUCTS

ITEMS

REQUIREMENTS

QUANTITY

INCLUDE ORDER

SCRAP

ENTERPRISE

RECOMMENDED

TIME

DEMAND

MANAGEMENT MONEY

SCHEDULE

MAKE

MATERIAL

SHIPMENT

HISTORY YIELD

COMPONENTS

ABLE

STANDARDS PURCHASE

SCHEDULING

EVEN AVAILABLE

SUPPLIER

FUTURE

POSSIBLE NEW

MAINTAIN

INTIGRITY

FINANCIALS

INDUSTRY LEVEL

MASTERBOM

RESOURCES

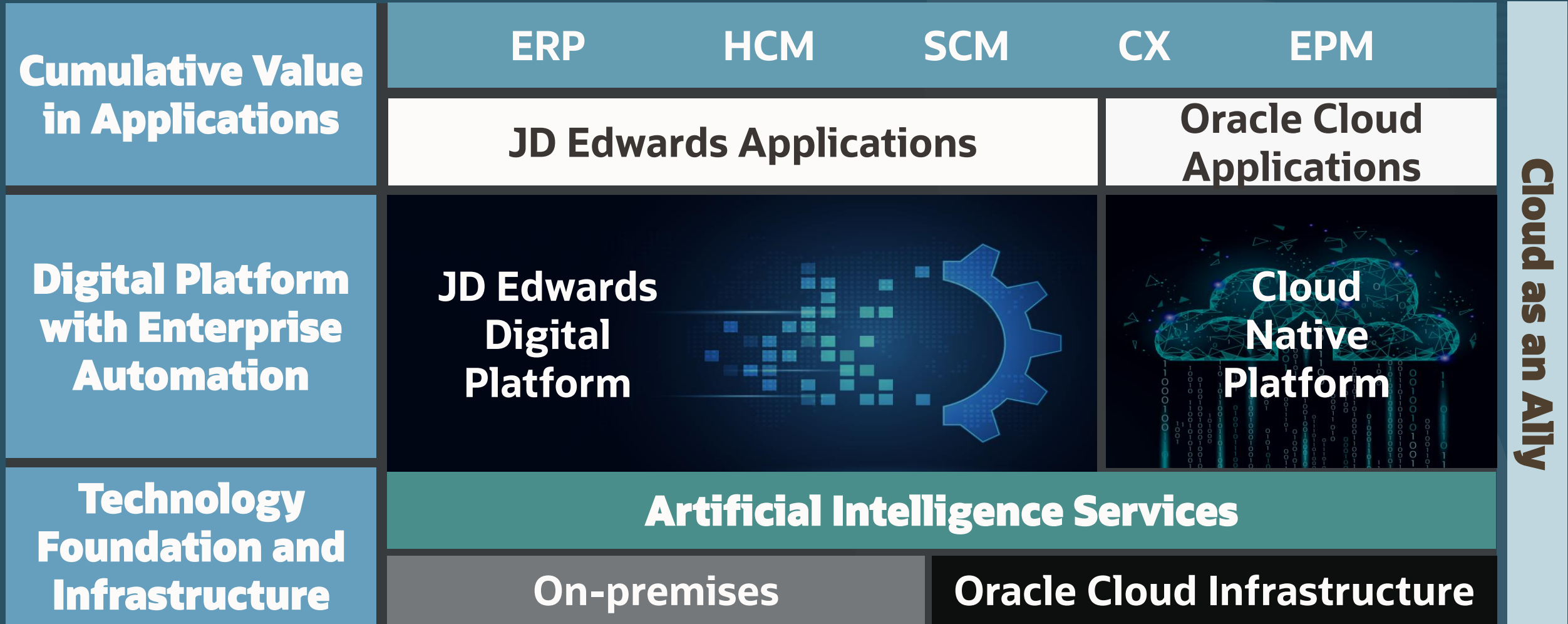
CALCULATION PURCHASED

# Your Data is Your Digital Gold



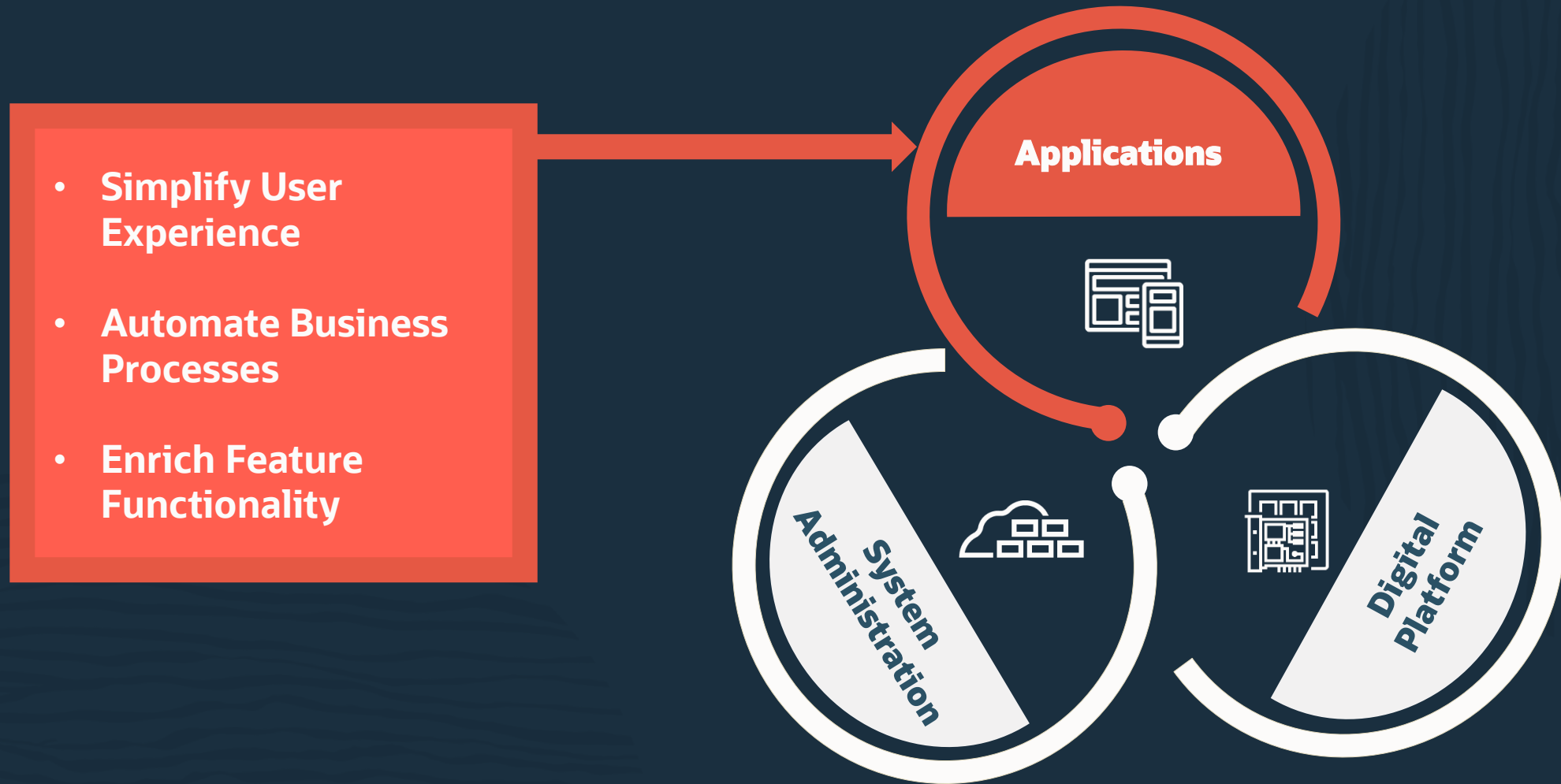
# JD Edwards Solution Architecture

## Release 24 and Beyond

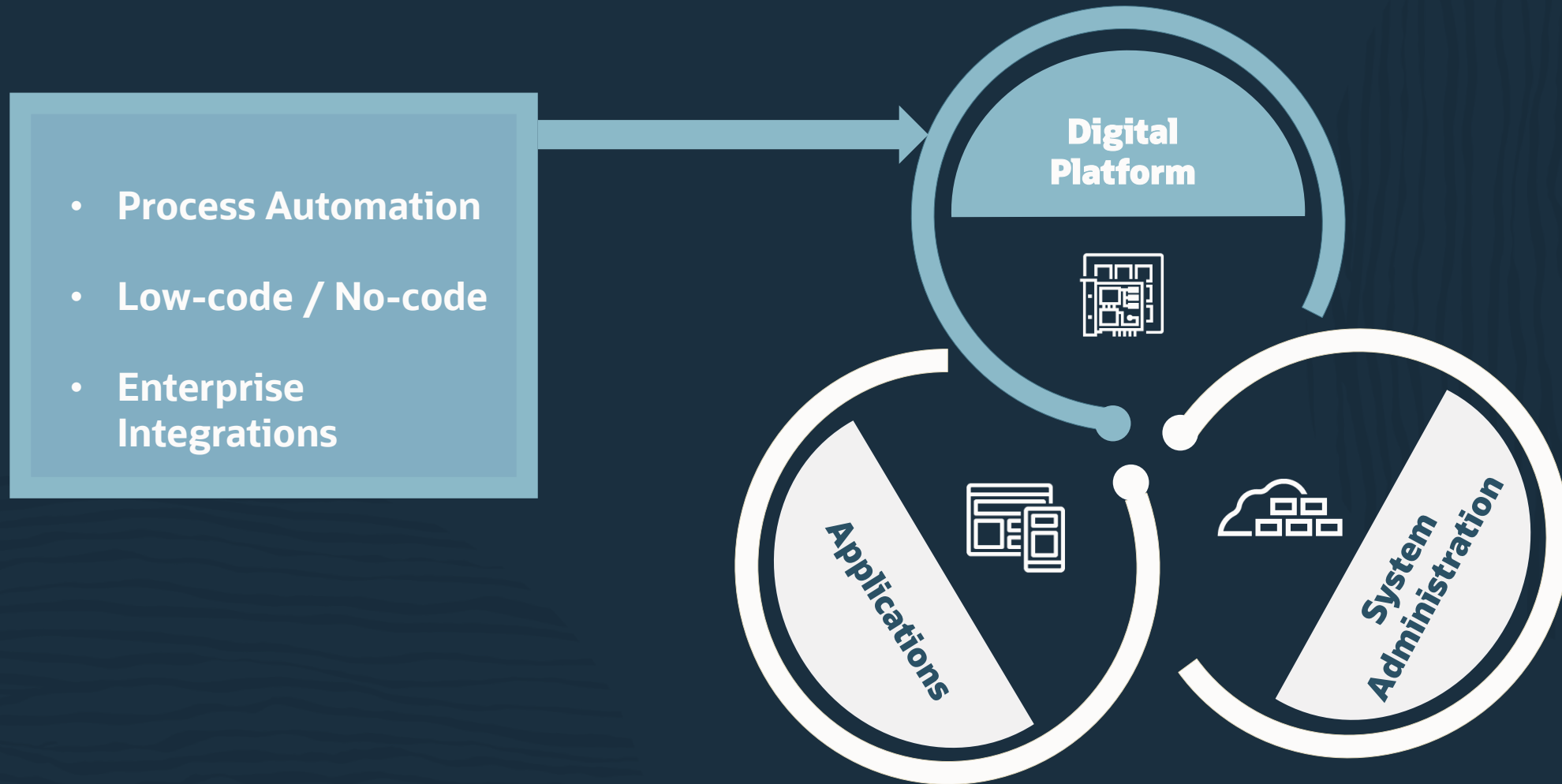


Cloud as an Ally

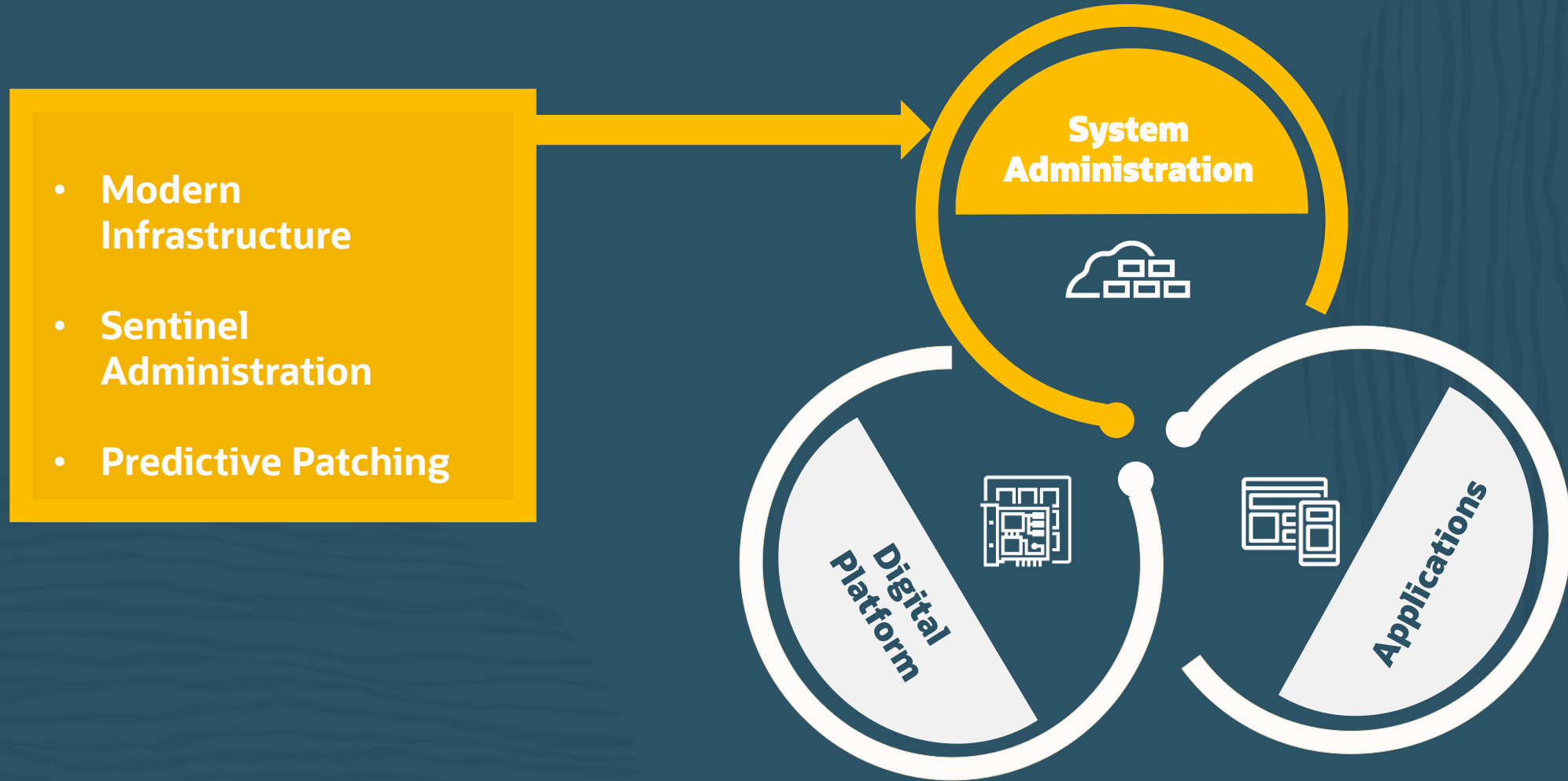
# JD Edwards Product Strategy



# JD Edwards Product Strategy



# JD Edwards Product Strategy



The Oracle logo, consisting of the word "ORACLE" in a bold, red, sans-serif font. The background of the slide features a blue and white abstract design with a hexagonal pattern on the left side and a light blue gradient on the right.

**ORACLE**

**JD Edwards EnterpriseOne 9.2**

**Release 24**

*Automate. Optimize. Transform.*



# Release 24 – Automate, Optimize and Transform

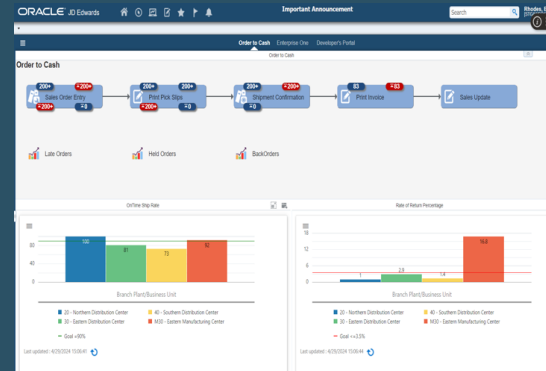
	Release 24 November 2023	Release 24 December 2023 – May 2024	
--	-----------------------------	--	--

<b>Cumulative Value in Applications</b>	<ul style="list-style-type: none"> <li>Enterprise Automation: Requisition to Receipt</li> <li>Standalone Price Check in Procurement</li> <li>Volume Based Buying Recommendations in Procurement ...</li> </ul>	<ul style="list-style-type: none"> <li>Improved Asset Cost Analysis</li> <li>Automated Safety Stock Population</li> <li>Allow Inventory Locations to be Put on Hold ...</li> </ul>	<ul style="list-style-type: none"> <li>Financials Year End 2023</li> <li>Order Preparation Day and Delivery Date Preference Based on Workday Calendar ...</li> </ul>	<ul style="list-style-type: none"> <li>Enterprise Automation: Order to Cash</li> <li>Enterprise Automation for Procurement: Analyze Metrics ...</li> </ul>
<b>Digital Platform with Enterprise Automation</b>	<ul style="list-style-type: none"> <li>Workflow Monitor</li> <li>Task Tracking</li> <li>Notification Reminders...</li> </ul>	<ul style="list-style-type: none"> <li>Output Stream Access for Orchestrations</li> <li>User-Defined Delimiter for Orchestrator Output to CSV...</li> </ul>	<ul style="list-style-type: none"> <li>Return Connector Response as a Variable</li> <li>Reorder Orchestration Inputs</li> <li>My Workflow Monitor ...</li> </ul>	<ul style="list-style-type: none"> <li>Orchestrator Send a File</li> <li>Ascending and Descending Thresholds ...</li> </ul>
<b>Technology Foundation and Infrastructure</b>	<ul style="list-style-type: none"> <li>Update Manager: Application Update Support via Web Client</li> <li>Update Manager: Batch Update via Web Client ...</li> </ul>	<ul style="list-style-type: none"> <li>Server Manager: Centralized Configuration for Enterprise and Integration Servers</li> <li>Web OMW: Business View Design Tool ...</li> </ul>	<ul style="list-style-type: none"> <li>Update Manager: UDO Deployment</li> <li>Server Manager: Enterprise Server Component Change Retain External Files ...</li> </ul>	<ul style="list-style-type: none"> <li>Server Manager R24 Additional APIs</li> <li>Improved Automatic Serialize Object Generation ...</li> </ul>
<b>Cloud as an Ally</b>	<ul style="list-style-type: none"> <li>OCI AI/ML Accelerator</li> <li>Oracle Guided Learning support</li> </ul>	<ul style="list-style-type: none"> <li>Integrated Chatbot Support</li> <li>Automatic and Manual Scaling for Autonomous Database</li> </ul>	<ul style="list-style-type: none"> <li>Dynamic Hardware Shapes for OCI</li> <li>Microsoft Entra Single Sign-on</li> </ul>	<ul style="list-style-type: none"> <li>Authentication for Oracle Cloud Infrastructure Services</li> </ul>

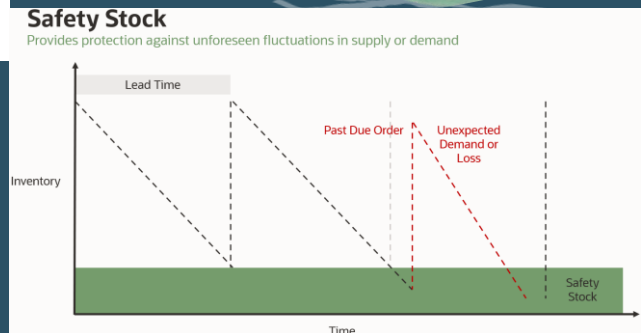
# Applications

## Release 24 Creating your Digital Gold

- **Simplified User Experience**
  - Standalone Price Check in Procurement
  - Usability Enhancements for Resource Assignments
  - Automated Safety Stock Population
- **Automate Business Processes**
  - Enterprise Automation: Procure to Pay
  - Enterprise Automation: Order to Cash
  - Volume Based Buying Recommendations in Procurement
- **Enrich Feature Functionality**
  - Improved Asset Cost Analysis
  - Advanced Lot Trace/Track for Blend
  - Production Lot/Serial Number and Location Automation



The screenshot shows the Oracle Operation Search for Advanced Lot Trace/Track interface. It includes a search bar, filters, and a table of results. The table has columns for Order Number, Operation Number, Material, Component, Lot, Date, Status, and Page No. The table contains several rows of data.



**This form has 0 Errors 1 Warnings**

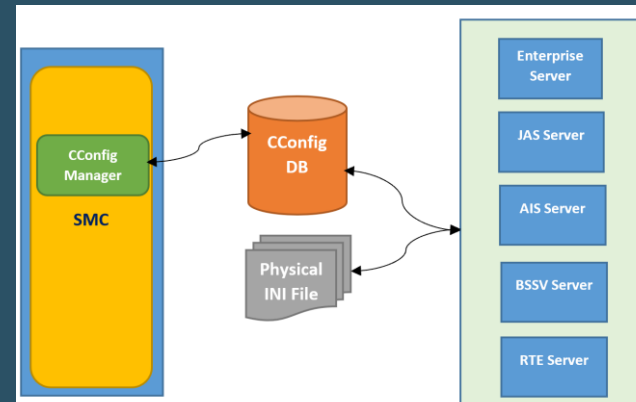
Issues (click each label for more information):  
▶ [Informational: Volume-Based Buying Recommendation Exist](#) ▶

Please look for the highlighted fields or use Go To Error links to move the focus to the control with the error, correct the entries, and resubmit your request.

# System Administration

## Release 24 Protecting your Digital Gold

- **Modern Infrastructure**
  - Server Manager: Centralized Configuration
  - Auto-Scaling on Autonomous Database
  - Full Stack Disaster Recovery Support (OCI)
- **Sentinel Administration**
  - Object Promote to Package
  - Automated Tools Release Configurator (ATRC)
  - Server Manager: Consolidated User Logging
- **Predictive Patching**
  - Impact Analysis Dashboard
  - Special Instruction Tracking, Merge & Automation
  - Update (UN) Support via Web Client



Object Name	Object Description	Actions
D17WORK	Data structure for workflow demo	Object Actions, Token Actions

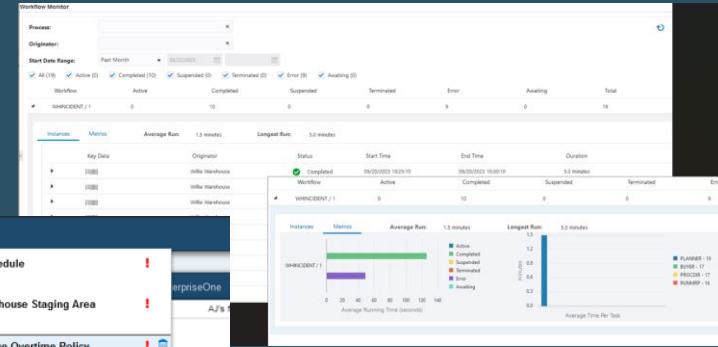
Object Name	Last Patched	Last Used	Used	Used	Last Used
OR000000	12/10/2018	20180108	✓	✓	20180108
OR000001	09/10/2018	20170919	✗	✗	20170919
OR000002	03/27/2018	20180806	✓	✓	20180806
OR000003	08/18/2018	20180801	✗	✗	20180801
OR000004	08/18/2018	20180801	✗	✗	20180801
OR000005	08/18/2018	20180801	✗	✗	20180801
OR000006	08/18/2018	20180801	✗	✗	20180801
OR000007	07/07/2018	20180806	✗	✗	20180806
OR000008	07/07/2018	20180806	✗	✗	20180806
OR000009	07/07/2018	20180806	✗	✗	20180806
OR000010	07/07/2018	20180806	✗	✗	20180806
OR000011	07/07/2018	20180806	✗	✗	20180806
OR000012	07/07/2018	20180806	✗	✗	20180806
OR000013	07/07/2018	20180806	✗	✗	20180806
OR000014	07/07/2018	20180806	✗	✗	20180806
OR000015	07/07/2018	20180806	✗	✗	20180806
OR000016	07/07/2018	20180806	✗	✗	20180806
OR000017	07/07/2018	20180806	✗	✗	20180806
OR000018	07/07/2018	20180806	✗	✗	20180806
OR000019	07/07/2018	20180806	✗	✗	20180806
OR000020	07/07/2018	20180806	✗	✗	20180806



# Digital Platform

## Release 24 Leveraging your Digital Gold

- Streamline Process Automation
  - Ascending and Descending Thresholds on Watchlists
  - Workflow Monitor
  - Task Tracking/Notification Reminders
- Enterprise Integrations
  - Authentication for OCI Services
- Improve User Experience
  - Click to View PDF Attachments
  - CafeOne Attachment Viewer



A notification list showing various tasks and reminders. A 'Set Reminder' dropdown menu is open, showing options: Clear, Today, Tomorrow, One Week, and Custom.

- Acknowledge Work Schedule (08/28/2023 20:30:47)
- Assignment: Clear Warehouse Staging Area (08/28/2023 20:30:23)
- Review and Acknowledge Overtime Policy (08/28/2023 20:30:12)
- Status change for device SH70 (08/28/2023 19:59:22)
- Announcing New Innovation for JD Edwards Enterprise... (08/28/2023 19:56:47)
- Announcing New Innovation for JD Edwards Enterprise... (10/12/2022 12:10:16)
- Reminder: Check Your Incidents (06/05/2022 17:30:17)
- Jeff Newsletter (01/07/2022 14:23:30)

Summary cards showing shipment counts for different stages:

- 1 Shipments Approved f...
- 2 Shipments Confirmed
- 106 Shipments Pending
- 4 Shipments to Ship

A screenshot of an 'Address Book - Work With Addresses' application. The main view shows a table of records with columns for Address Number and Alpha Name. The record for '4575 Houtkooper, Paul' is selected. A 'Media Object Viewer' is open on the right, displaying a list of image files (paul.jpg, Paul 2.jpg, Paul 3.jpg) and a preview of the selected image.

Address Number	Alpha Name
2550	Smith, Sam
4575	Houtkooper, Paul
4800	Josephson, Michael
4801	Breton, Josephine
4802	Fraser, Carol
4803	Beck, Jeremy

# AI across the Oracle Cloud Ecosystem

Data Privacy and Security

Oracle AI Partners

## Applications

Fusion Applications

NetSuite

Fusion Analytics

Industry Applications

On-Premises Products

## AI Services

NEW



OCI Generative AI

NEW



OCI Generative AI Agents



Anomaly Detection



Speech



Language



Vision



Document Understanding

## ML for data platforms



OCI Data Science



AI in Oracle Database



MySQL HeatWave Vector Store



OCI Data Labeling

## Data

## AI infrastructure




Compute bare metal instances and VMs



OCI Supercluster with RDMA networking

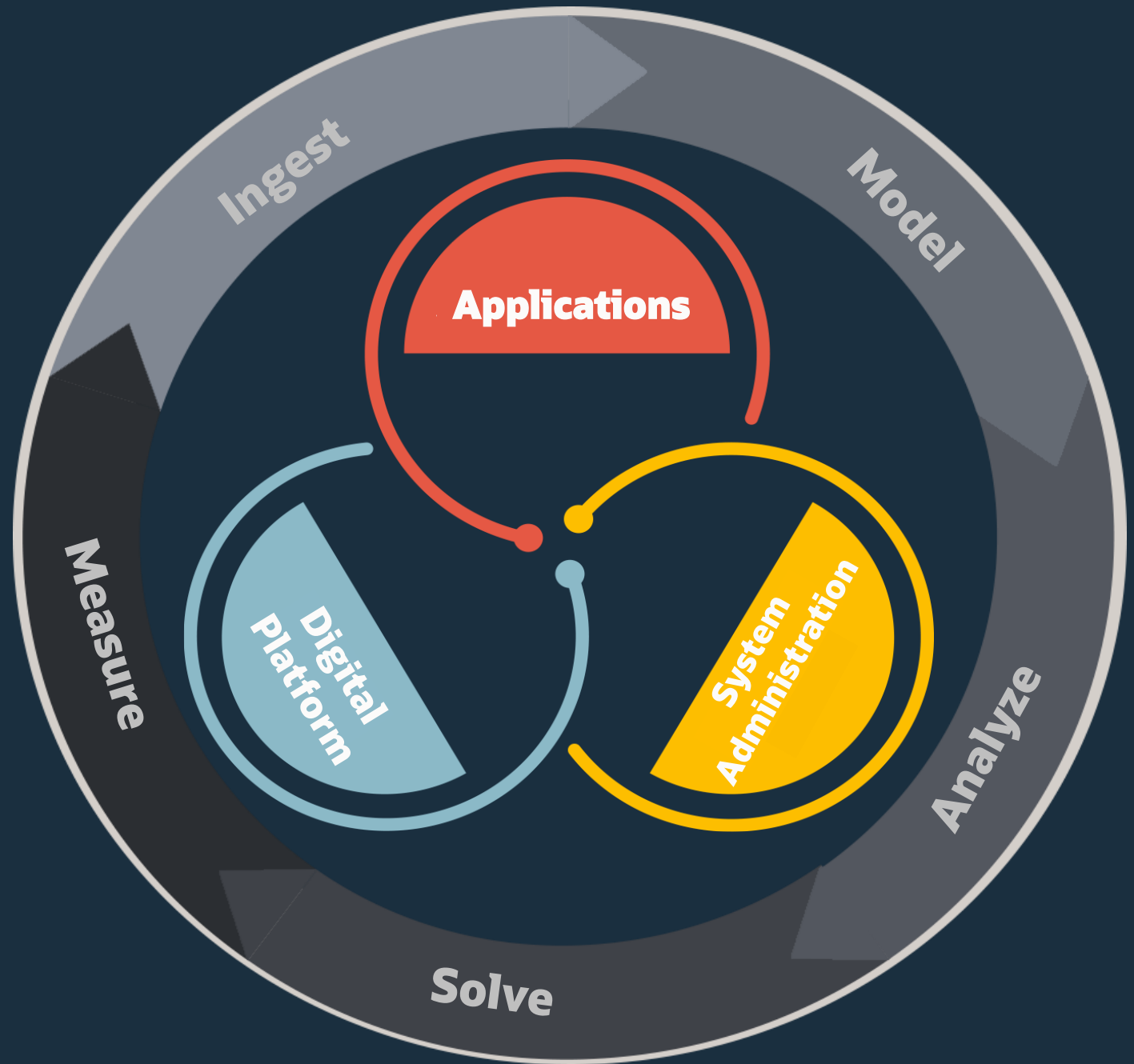


Block, object, and file storage; HPC filesystems



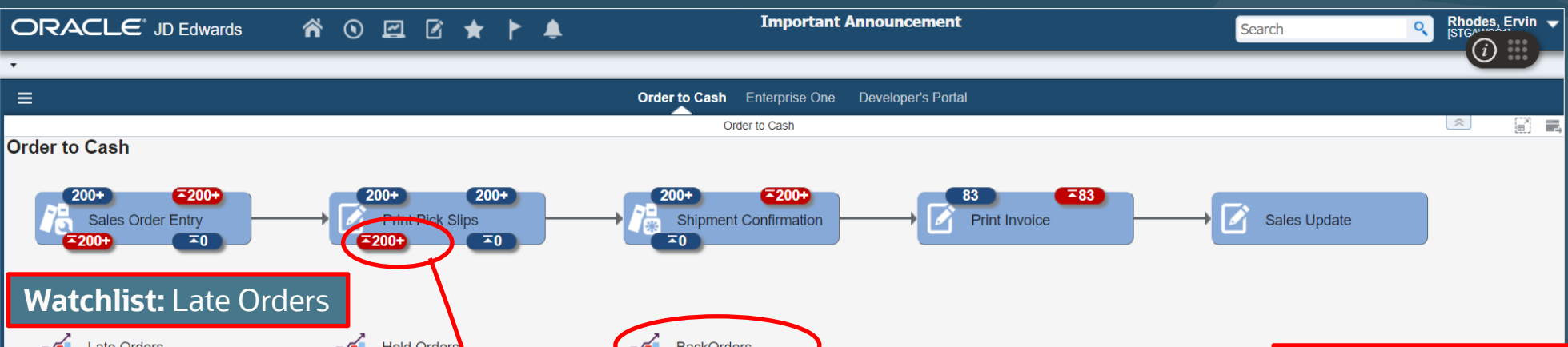
# **JD Edwards Release 25 and Beyond**

# Enterprise Automation



Delivered

# Prebuilt Process Models



Watchlist: Late Orders

Late Orders | Held Orders | **BackOrders**

Manage Existing Order

Customer Service Inquiry | Additional Selections

Order Number: SO \*  
Sold To: \*  
Ship To: \*

Item Number: \_\_\_\_\_  
Customer PO: \_\_\_\_\_

Find | Print Pick Slip | Credit Check | Shipment Status | Online Invoice

Records 1 - 119

Order Number	Order Type	Order Co	Line Number	Hold Code	Sold To	Sold To Name	2nd Item Number
10094	SO	00001	1.000		4284	Central Distributor	220
10112	SO	00001	1.000		4245	Cloud Nine Inc.	220
10113	SO	00001	1.000		4245	Cloud Nine Inc.	220
10128	SO	00001	1.000		4242	Capital System	1001
10129	SO	00001	1.000		4242	Capital System	221

UX One Page: Backorders

Backorders: 35 My Backorders, 71 Released Backorders

**Backordered Sales Order Lines by Customer**

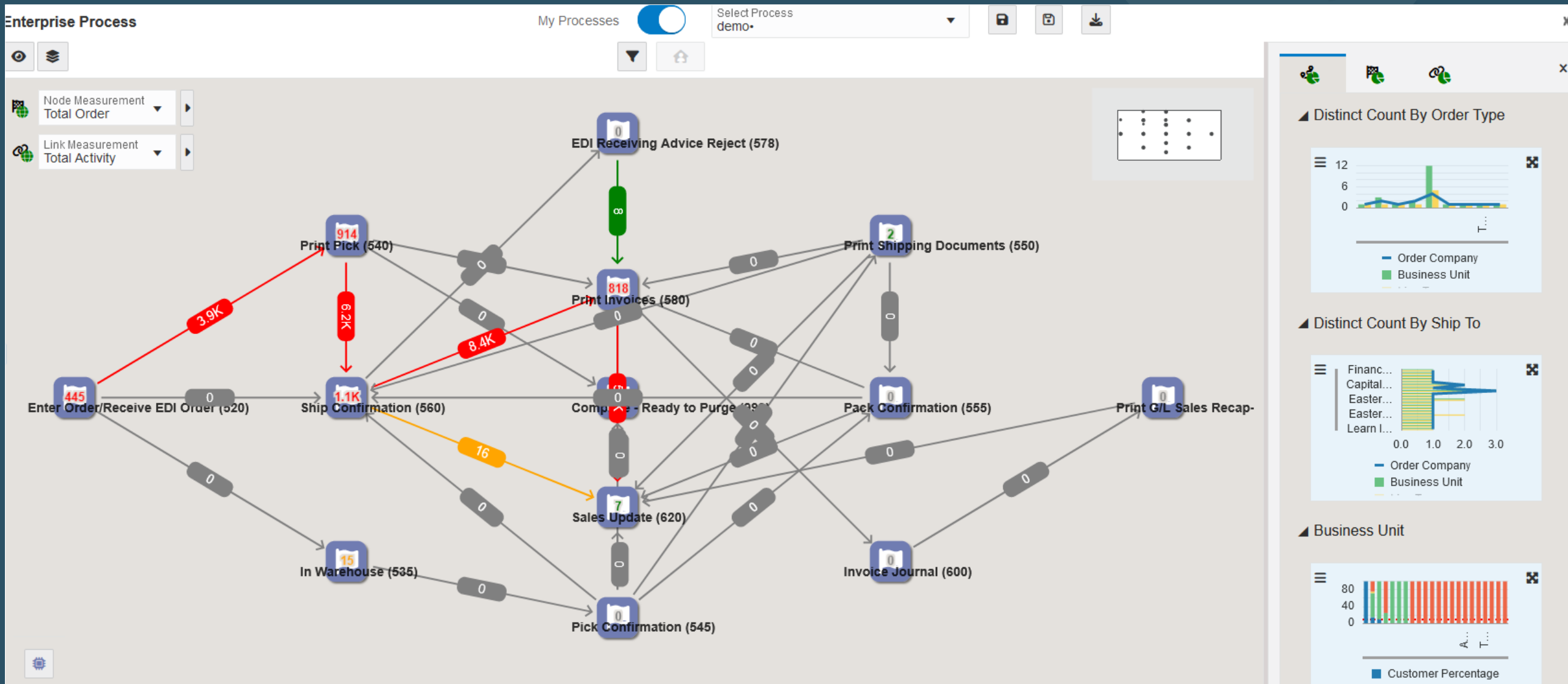
**Backordered Sales Order Lines by Item**

**Released Backorder Sales Order Lines by Requested Date**

**Backordered Sales Order Lines by Next Order Status**



# Process Modeler



# Roadmap: Process Modeler

Enterprise Process

My Processes  Select Process demo

Node Measurement Total Order

Link Measurement Total Activity

```
graph TD; A[Enter Order/Receive EDI Order (520)] -- 3.9K --> B[Print Pick (540)]; B -- 6.2K --> C[Ship Confirmation (560)]; C -- 1.1K --> D[Sales Update (620)]; C -- 8.4K --> E[Print Invoices (580)]; E -- 5.2K --> D; E -- 8 --> F[EDI Receiving Advice Reject (578)];
```

Distinct Count By Order Type

Order Type	Order Company	Business Unit
...	...	...

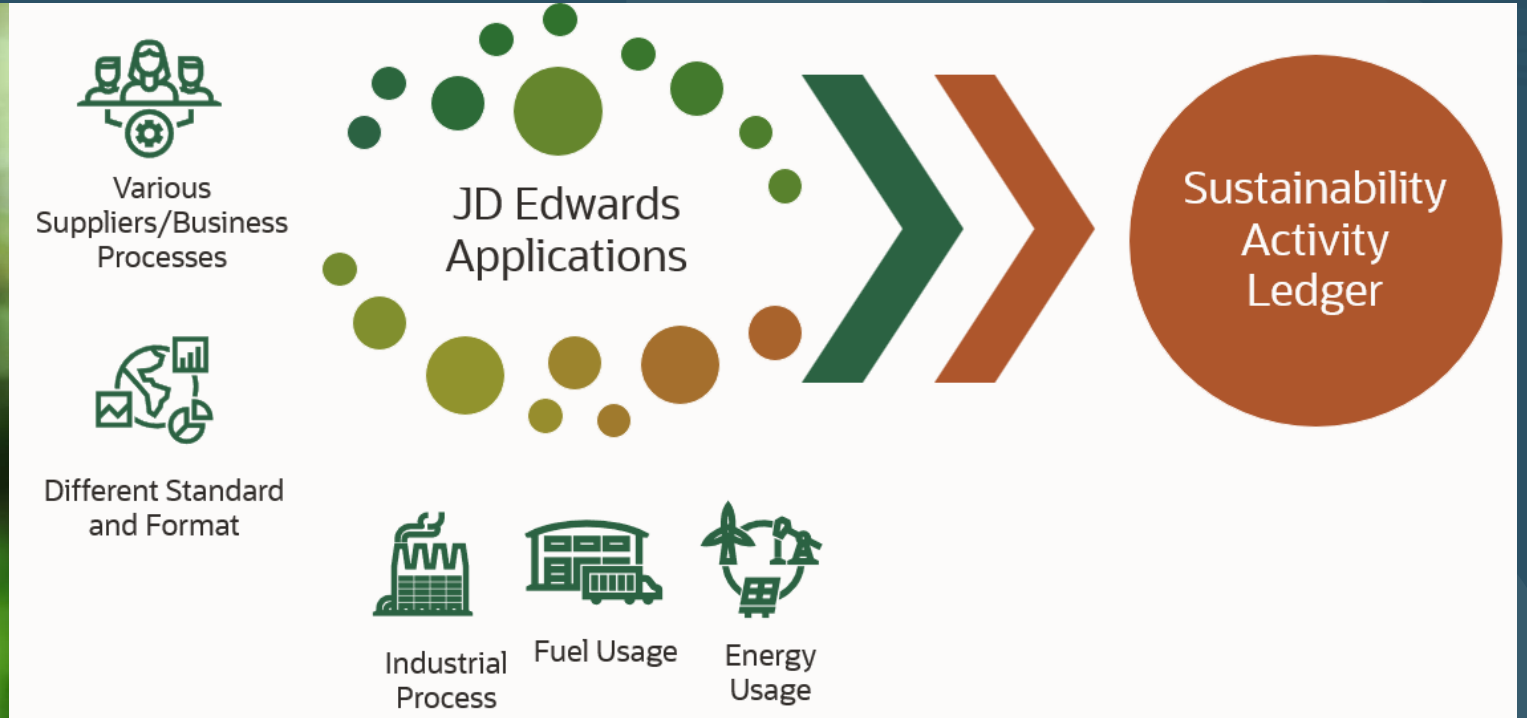
Distinct Count By Ship To

Ship To	Order Company	Business Unit
Financ...	...	...
Capital...	...	...
Easter...	...	...
Easter...	...	...
Learn I...	...	...

Business Unit

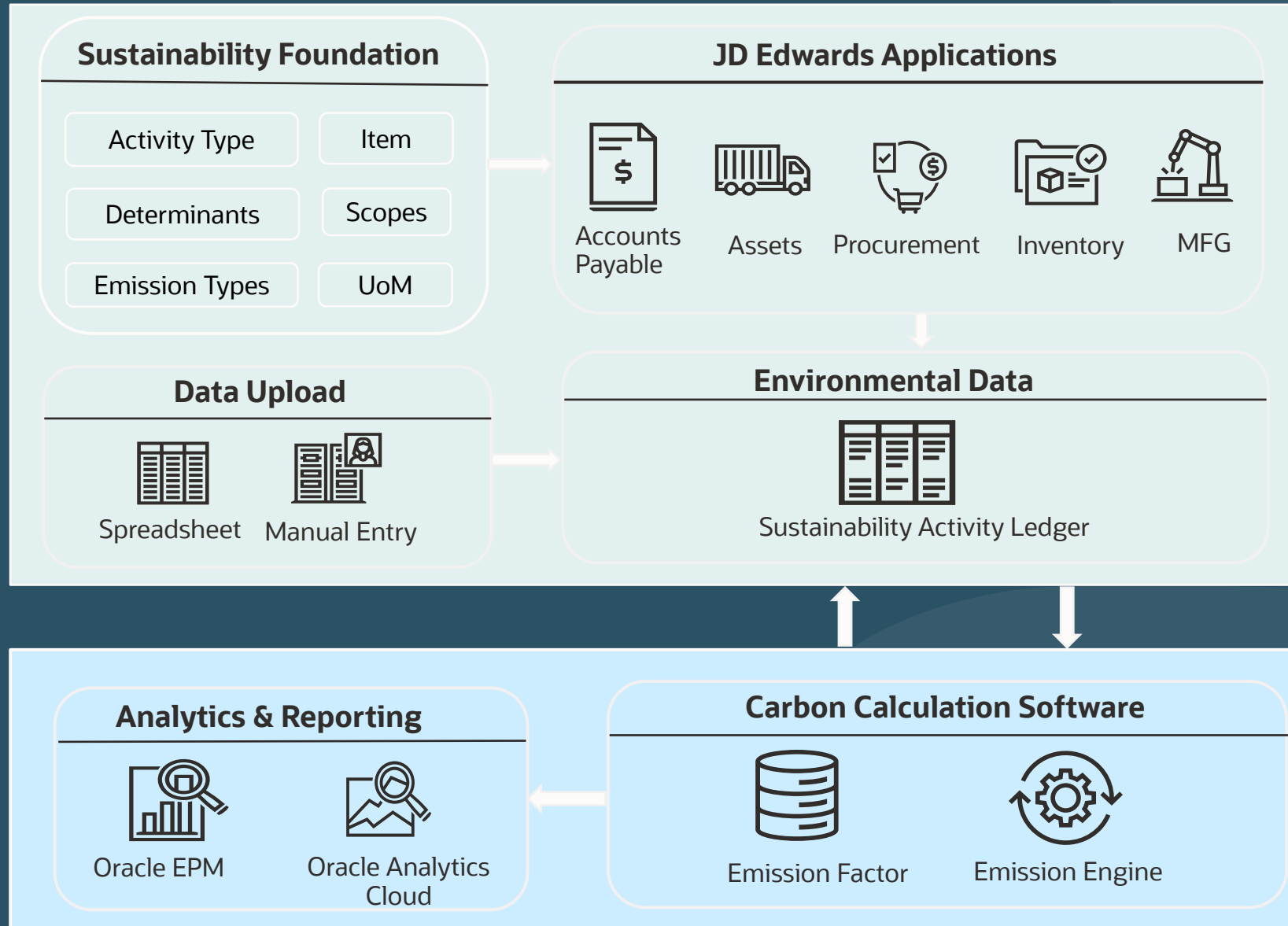
Business Unit	Customer Percentage
A...	...
T...	...

# JD Edwards Sustainability Framework



# JD Edwards Sustainability Framework

Planned





Announcing JD Edwards  
EnterpriseOne  
**Release 24**  
May Update



Register for  
**BLUEPRINT 4D**

May 7 - 10, 2024

Dallas, Texas

Building the future-ready organization



Premier Support for  
EnterpriseOne Extended  
through at least  
**2035!**

[Learn More](#)



Roadmap



Announcements



Product Catalog



JDE and SaaS



JDE Documentation

# Stay Connected!



Quest Oracle Community



The JDE Connection



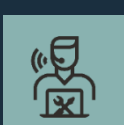
LearnJDE



JD Edwards Professionals  
JD Edwards Partner Group



OracleJDEdwards



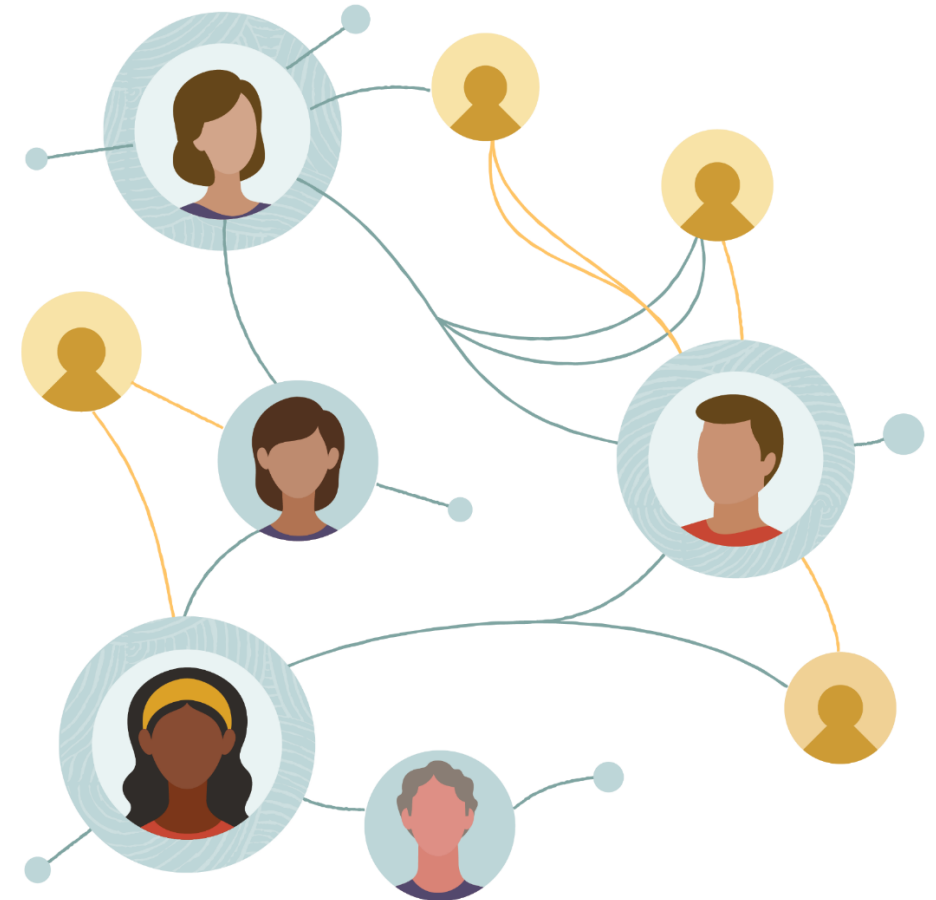
My Oracle Support



Oracle JD Edwards



OracleJDEdwards



Together, we will relentlessly **improve** and **innovate**.

Together, we will **optimize** and **transform** how you use Oracle applications and technologies.

