

# NetSuite for Manufacturing Companies

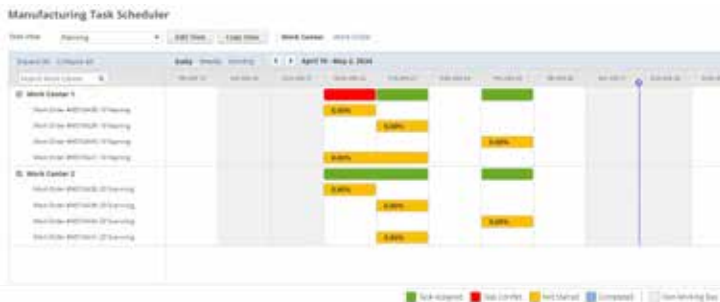
NetSuite's manufacturing module helps production operations develop, manufacture, and distribute products cost-effectively. The manufacturing module is an integrated part of the entire supply chain planning.

## ERP for Manufacturing

NetSuite eliminates the need for multiple separate systems by offering a fully integrated platform that supports all the main processes for a manufacturing and distributing company.

The manufacturing module provides full insight to the availability of manufacturing capacity, planned and confirmed production, and which components are needed when. In the event of supply disruptions, the system automatically alerts so that actions can be taken in time.

All production reporting occurs in real-time, providing full control and traceability in inventory, the supply chain, and accounting, as all transactions are automatically recorded in real-time.



**Manufacturing Task Scheduler**  
A graphical capacity tool with 'drag and drop' functionality for rescheduling.

## Industry-Specific Functionality

NetSuite offers industry-specific functionality for various manufacturing processes and suits companies of all sizes.

The manufacturing module contributes to increased productivity in processes while optimizing resource utilization to ensure customer satisfaction and meet expectations regarding price, quality, and delivery.

**Manufacturing Mobile**  
Left: Clock in at the workstation and job, view work instructions on the screen, and then start the job.  
Right: Report material usage and production in real-time directly in production.

## Key Benefits

- **Seamless Production:** Simplifies and streamlines manufacturing processes through an integrated platform that supports everything from planning and purchasing to final production, including real-time tracking, enabling immediate updates and continuous improvement based on data on waste and downtime.
- **Real-Time Reporting:** All production reporting occurs in real-time, and through NetSuite's Manufacturing Mobile, reporting can be done where production takes place. The operator can clock in to a job for accurate recording of operation time. You can also convey and display work instructions to the operator directly in Manufacturing Mobile.
- **Automated and Optimized Key Processes:** Optimize inventory levels via net requirements calculation (MRP), reduce shipping costs, and improve customer satisfaction through NetSuite's Supply Allocation engine.
- **Global Scalability and Adaptability:** Support for multiple languages and currencies allows companies to effectively manage and scale their international operations while handling complex global supply chains.

## Preconfigured Roles and Reporting

NetSuite has many preconfigured key roles with reports, KPIs, and dashboards within manufacturing. The system can also be easily customized to the specific needs of each customer. The result is a complete, purpose-built system adapted to today's needs.

## Modules in NetSuite tailored for manufacturing companies:

<b>Financial Management</b>	Real-time accounting Real-time reporting (income statement, balance sheet, inventory valuation, etc.) Reporting with 'as-of' functionality Bank payments via file Account reconciliation via file Invoice scanning Fixed Assets Global accounting, consolidation, foreign subsidiaries with different currencies
<b>Procurement</b>	Reorder point Purchase to order (PTO) Inbound (incoming) container management (consolidation of purchase orders) Quote management Contract management Blanket (call-off) orders Return to supplier Global supplier Master (multi-subsiary) Intercompany transactions
<b>MRP – Material and Production Planning</b>	Forecast management Net material requirements planning (MRP, DRP) Production planning (MPS) Creation of purchase orders, production orders, internal transfer orders Order suggestions considering lead times, batch rules, ordering criteria, etc.
<b>Manufacturing</b>	Make to stock, Make to Order, Outsourced, or order less manufacturing Material reservation Real-time and historical (as-of) reporting of work in progress (WIP) Actual manufacturing cost reporting Mobile app for real-time production reporting Graphical production planning Work instructions Bill of Materials (BOM) change management (ECO) Serial number/lot number traceability
<b>Inventory &amp; WMS</b>	Global Item Master Warehouse locations Serial number/lot number traceability Inventory Count with mobile app and barcode scanning Warehouse optimization (zones, many storage locations, logical/physical locations) Mobile handheld solution to support paperless processing and with barcode scanning capability one simplifies, automates, and increase warehouse process accuracy Optimized goods receipt, pick-pack-ship and pick to production processes Automated wave release of customer orders for picking
<b>QMS – Quality Management</b>	Supports quality control in receiving, shipment, manufacturing, and warehouse processes Mobile tablet interface with camera functionality Printing of CoA – Certificate of Analysis
<b>Order Management</b>	Flexible pricing with discount and campaign management Allocate against stock or supply order (purchase, manufacturing, transfer) Allocate part of stock for sales channel/customer group, or with margin optimization Automatic invoicing Service and warranty management Return management Global customer Master (multi-subsiary) Intercompany transactions
<b>CRM and Marketing</b>	Always included in NetSuite – no separate license needed. <b>Sales:</b> Lead to customer, quote management, activities (to-do's, meetings, calls), calendar <b>Marketing:</b> Campaign, subscription management, newsletters, online forms <b>Support:</b> Cases via email or online forms, automatic assignment, escalation functionality, time tracking